



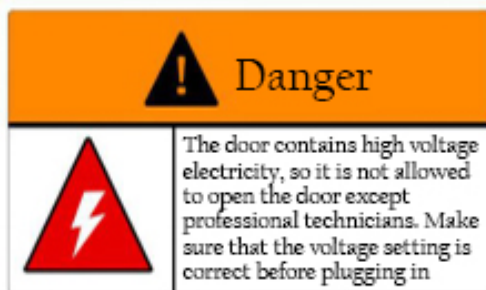
Instruction Manual



ATTENTION

To have better shooting experience, please do not put the machine under direct sunlight or near infrared red LED light Before use, please notice the warning decal on the machine. Will not work Outdoors.

- ◆ **Danger:** It may cause damage if the machine is not handled properly
- ◆ **Outfall:** It is recommended to discharge water once every 2 weeks, otherwise it may cause damage of the air pump.



Contents

BIG SHOT	Error! Bookmark not defined.
Introduction	4
I. Introduction of the Product:	4
II. Features of the Product:	4
Specifications and Technical Parameters	6
Accessory list	7
How to Move and Position the Machine	8
I. How to Move the Machine	8
II. How to Position the Machine	9
III. Unsuitable places	9
IV. Where to place	9
Precautions before Startup	10
Wiring and Precautions	11
Installation and Maintenance	13
I. Installation and commissioning	13
II. Visual inspection	13
III. Operation inspection	13
IV. Maintenance	13
V. Cleaning	14
Instruction on game :	17
I. Control table and game start scene	17
II. How to play	17
III. Menu setting	18

IV. Camera correction.....	20
V. Gun Adjustment	21
VI. Instruction For Regular Drainage	22
VII. How to link up machine (1 router can connect up to 4 machines)	24
VIII. How to turn on the machine	25
IX. Left and right side connection installation	25
X. Troubleshooting	30

Introduction

I. Introduction of the Product:

BIG SHOT shooting game is a two player cooperative or single player indoor machine that can be run with or without Ticket redemption.

II. Features of the Product:


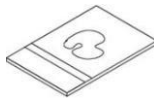

- Novel gameplay full of fun;
- Elegant appearance, bright-colored and exquisite patterns, angle iron and metal plate, safe and durable due to rust-proof treatment;
- Real gun recoil feel in a safe environment for all ages.
- 7 different game levels, play can be controlled by time or by “bullet count.”
- 85 inch high definition monitor

- JET Games Corporation 822 South Nova Road, Daytona Beach FL 32114
www.JETGamesUSA.com

Accessory list

For the normal use of the machine, please open the package and carefully check whether the following items are included.

The accessory list is below:

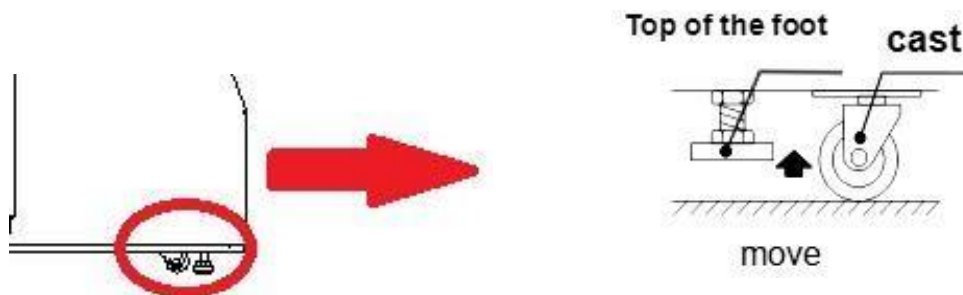
No.	Name	No. /Specification	QTY	Unit	Picture	Remark
1	Power cord	10A/250V-3M	1	Pcs		
6	Manual	English	1	Pc		
7	Key	AA33	2	Pc		

Please open the package and check whether all accessories are included. If not, please contact the distributor of the machine for check.

How to Move and Position the Machine

I. How to Move the Machine

There are casters under the machine. When moving the machine for a short distance, you should raise foot to make the casters touch the ground and push the machine. As there will be danger of overturning when the foot hits obstacle on the ground, you should move the foot up as much as you can and pay attention to obstacles ahead and uneven places when moving the machine along the ground.



ATTENTION

Please unplug the power socket before moving to prevent accidents and failure.

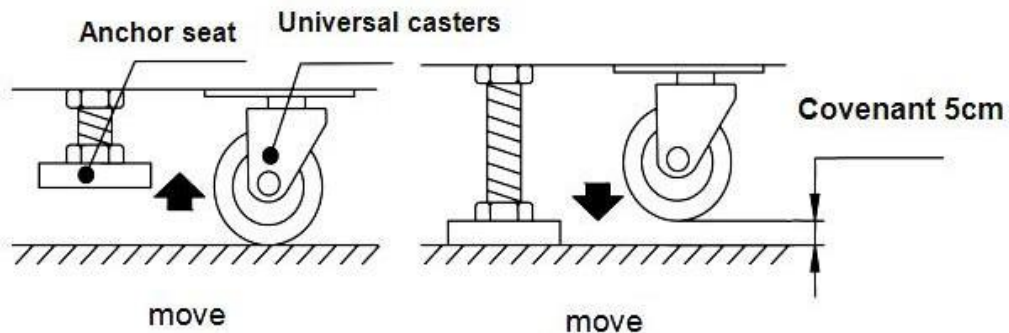
Please do not damage the cable when moving to prevent accidents and failure.

Please move the machine before raising the foot margin as much as you can to prevent accidents and failure.

The machine shall be moved by at least two people to prevent injury caused by the accident.

II. How to Position the Machine

- Please place it on flat ground where it won't slide.
- Please use the following foot to fix the machine (as shown below)
- Loosen the tightly locked nuts of the foot, tighten the bolts of the foot with a wrench, and keep the trundle approximately 5mm away from the ground.
- Tighten nuts clockwise and fix them.



III. Unsuitable places

- Place in which the machine may have condensate water or with high humidity;
- Place close to high-temperature objects;
- Places with direct sunlight (open door to outside, or under a skylight or large window)
- Game will not work outside. (This game uses IR lasers to score and sunlight is made of all spectrums of light, game will not score or shoot)
- Place close to equipment that may easily produce sparks;
- Place with heavy vibration; (vibration can cause the IR laser to uncalibrated)
- Dusty place.

IV. Where to place



Warning: The machine is only suitable for indoor use, not outdoor use.

JET Games Corporation 822 South Nova Road, Daytona Beach FL 32114

www.JETGamesUSA.com

Precautions before Startup

- 1) Check parameters of the incoming AC power supply. This game pulls 13.6 amps on start up (surge) in 110 volt ac setting. Please insure you are using the supplied game cable and this unit is on it's own Plug rated at 20 amps. Once the game is running it pulls about 5 amps.
- 2) Excessive loads on a power socket might cause socket overheat and fire accident.

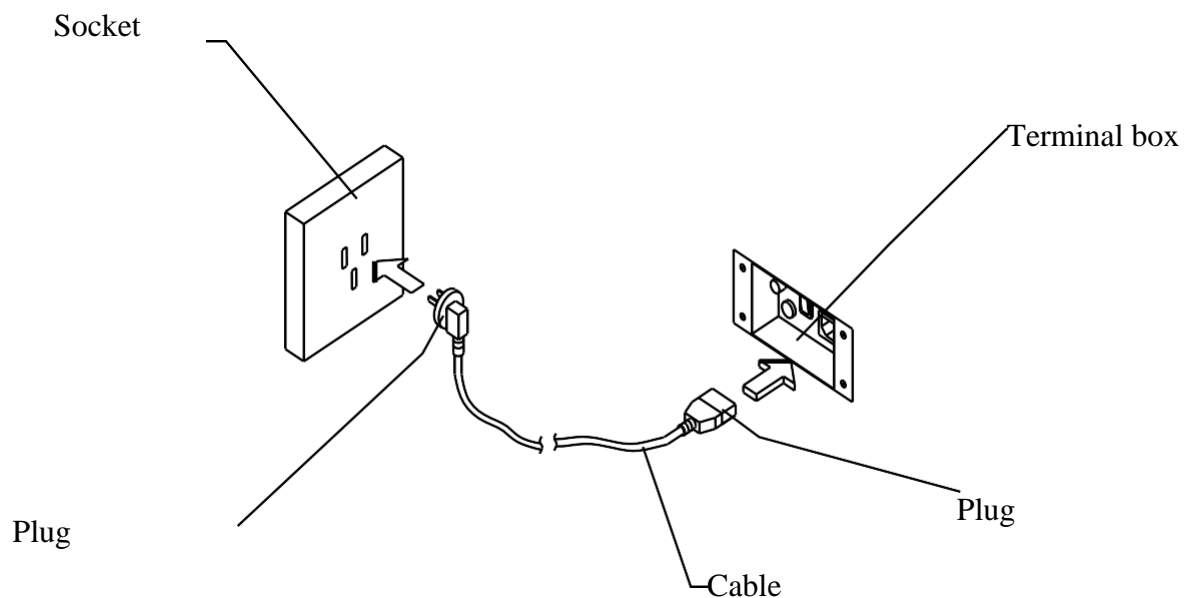


Warning

Do not change or replace parts at your will when assembling the machine to
fire disaster or short

Wiring and Precautions

- Connect one end of the cable to the terminal box of the machine, and connect the other end to the socket.
- Connect the power supply according to the voltage on the label, or the machine might be damaged.
- Please confirm whether there is grounding in the socket to avoid unnecessary damage.
- If the grounding cannot be done through the socket, please try other methods.

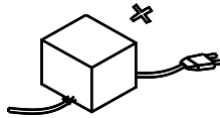


Warning: The working voltage of the machine is 110V in the USA. Please connect the power supply according to the label, or the machine might be damaged.

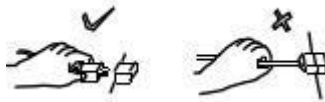


Attention:

- The cable cannot be pressed by heavy objects, or it might be easily damaged and cause short circuit, and even fire disaster.



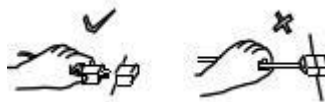
- When unplugging the cable, you should grasp the plug instead of the cable.



- It is not allowed to directly unplug with wet hands.



- It is not allowed to directly unplug with wet hands.



- It is not allowed to forcibly stretch, twist or expose the cable, or put it close to high-temperature objects.
- It is not allowed to put the cable at places where it may be easily kicked or touched.



- Use correct voltage and fuse (refer to technical parameters).

Installation and Maintenance

I. Installation and commissioning

- Please check the accessory list to assemble components before installation;
- The ground must be flat and solid. After placing the machine, adjust the feet to the ground and horizontally fix it;

II. Visual inspection

To safely use the machine, please check the following before startup:

- Whether the warning sign is intact, visible and stuck correctly.
- Whether parameters of power supply are consistent with the machine's.
- Whether screws of each component and components of the steering wheel are loose.
- Whether the connectors and terminals are loose.
- Whether the machine is placed stably; whether the adjustment of the Caster and the top foot is properly set.
- Whether the machine is placed properly.

III. Operation inspection

- Whether the speaker works normally.
- Whether the daylight lamp and the button light are on.
- Whether the image is clear and normal.

IV. Maintenance

- Before operation, confirm the machine runs normally and then use it;
- When there is dirt on the machine, wipe it with a soft cotton cloth with detergent;
- After the new machine has been used for one month, Check the screws on the Gun to make sure they have not gotten loose. This is the only mechanical part of the game and normally maintenance is required. Please also check to see if the top gun slides function properly. And add dry lubricate to the slide if needed like graphite or CRC dry lubricant.

JET Games Corporation 822 South Nova Road, Daytona Beach FL 32114

www.JETGamesUSA.com

Normal lubricates like WD40 are water based and dry over time. They also promote dirt and grease to form on the gun and slide.

V. Cleaning

➤ **Housing**

Clean dirt on the surface of the machine with clean and soft cotton cloth.

➤ **Display**

Clean the outside of the display with clean and soft Display screen with no water; anything with acid is forbidden to touch the surface of the display.

➤ **Exhaust fan**

The exhaust fan is one of the main tools of dissipating heat inside the machine. It has to be clean and run normally with unobstructed outlet.



Warning:

➤ **Cut off the power supply for maintenance and repair of the machine.**

To prevent short circuit, relevant personnel should cut off the power supply when touching internal components of the machine. If the operation requires power supply, it should meet the requirements of the user's manual.

➤ **Use proper parts for replacement.**

Improper parts may cause short circuit, and damage of the main board and other components.

Do not place vases, cups, containers with water, chemicals or heavy objects on the machine.

The spilt liquid may cause short circuit and damage of parts. Meanwhile, falling objects may injure people and damage the machine.

➤ **Do not place objects in the air outlet of the machine.**

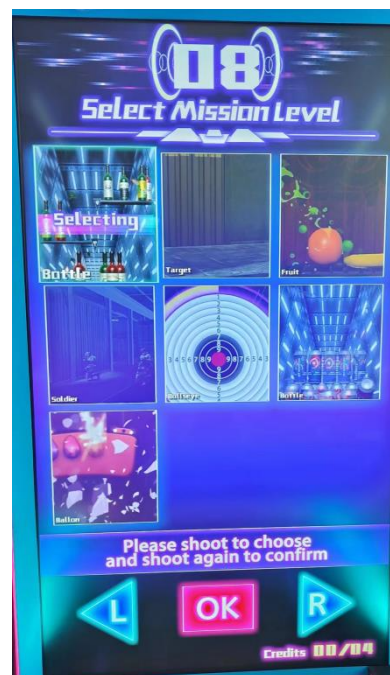
➤ The blocked air outlet may cause temperature rise inside the machine, affect the normal operation of the game, and even damage the parts.

➤ **Do not repair the machine by yourself.**

It may cause short circuit or malfunction and other failure.

Instruction on game :

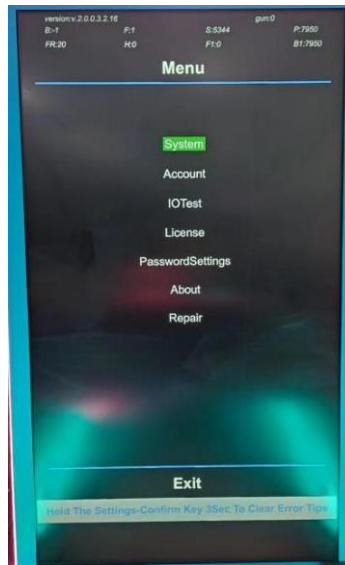
I. Control table and game start Menu



II. How to play

- ① Insert coin ;
- ② Press “←、→” to choose single player or multi-player mode and game, press “OK” to start
- ③ Score enough points in programmed time to enter into next game
- ④ Support to link up to 4 machines for competition
- ⑤ The player will get tickets according to the score

III. Menu setting



➤ Basic Settings



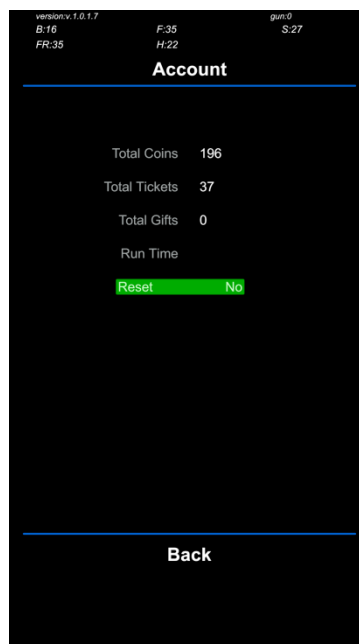
- ② Coin Settings: how many coins for 1 game (from 1-20)
- ③ Tickets: how many points for 1 ticket (variable payout point based)
- ④ Award mode: Ticket payout or no ticket payout
- ⑤ Language: English, etc
- ⑥ Free: Free play on/off
- ⑦ Player NO. : The Number of the machine in the linked together by LAN cable (locally)

JET Games Corporation 822 South Nova Road, Daytona Beach FL 32114

www.JETGamesUSA.com

-
- ⑧ DemoVOL: Turn on/off the background music
 - ⑨ Time-ModeA: The play time of bottle/fruit game (30,60,90,120,150,180,210,240 seconds)
 - ⑩ Time-ModeB: The play time of the target/soldier game(30,60,90,120,150,180,210,240 sec)
 - ⑪ Continue: continue game clock (10,20,30,40,50,60 Seconds, and no continue option)
 - ⑫ Time-Demo BGM(MIN):background music interval
 - ⑬ Clear Rankings(Rounds):Clear table of ranking rounds (Hero Board)
 - ⑭ Game Mode: Game play limited by time or Bullet count
 - ⑮ Bullet Number: bullets allowed per stage (50,100,150,200,250,300, etc. up to 1000)

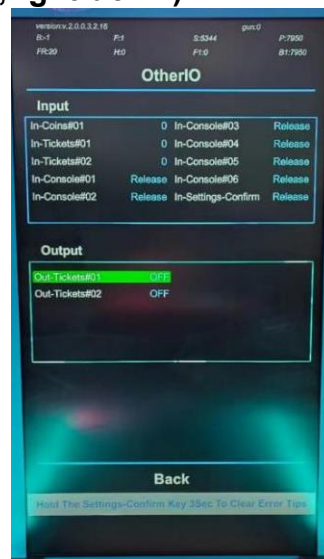
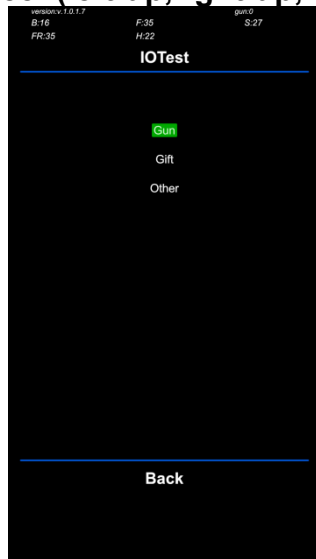
➤ **Account:**



To check the total coins, tickets ,gifts and reset

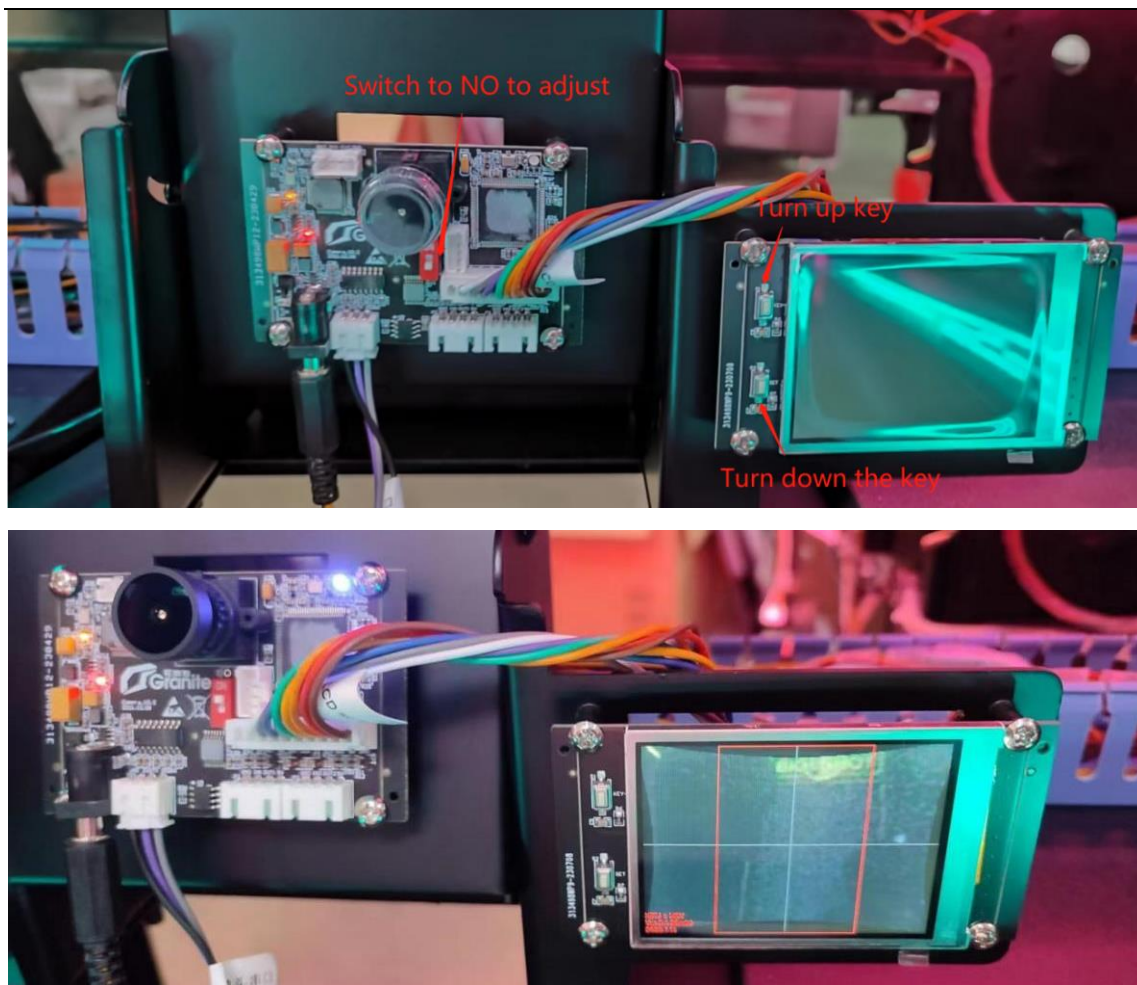
➤ IO TEST

Correction method: 3 point 1 line(sight bead, break,target) aim and shoot the red dot on the screen(left-up,right-up,left-down,right-down)



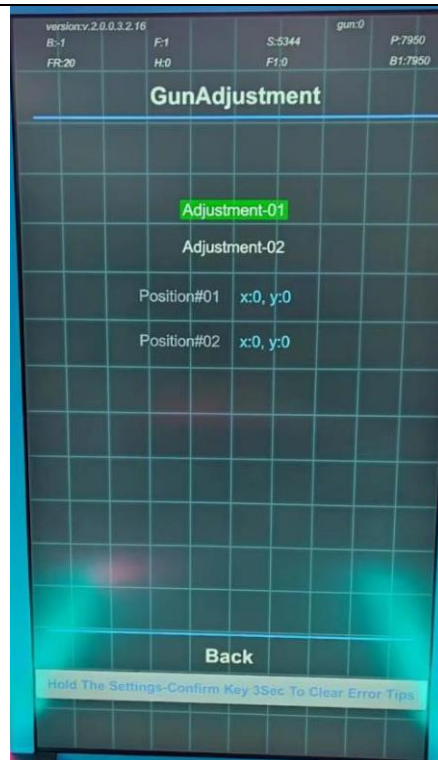
IV. Camera correction

- ① Turn the Switch to ON (turning on the camera display under the camera on), remove the tape from around the camera lens / filter
- ② Loosen the screws on the Camera base mount to player console, to adjust the position of the camera left to right. It is normal when the screen is in the red frame(like picture 2)
- ③ Press Turn Up Key to adjust the angle of the camera vertically ,it is correctly adjusted when the screen is upright (like pic 2), the picture should look the same angle as if you are at the player position looking at the game monitor.
- ④ Install the camera lens / filter and reinstall the tape, Turn the camera switch to OFF (turning of the camera display).
- ⑤ Enter main menu, Go to I/O test and recalibrate the gun using the instructions below. You must recalibrate both Guns for proper game play.



V. Gun Adjustment

Correction method: 3 point 1 line(sight bead,break, target) aim and shoot the red dot on the screen(left-up,right-up,left-down,right-down)



VI. Instruction For Regular Drainage

The Compressor should drain automatically every time the machine is turned off, It is recommended to check the drainage tray once every few weeks in Humid areas to prevent buildup.

- ① Turn off the machine, open the back door underneath the monitor as in photo below.
- ② Wait until the water is drained, take out the drawer and pour away the water.

PS: It is recommended to drain the water once in 15-30 days in humid areas and once in 30-50 days in dry areas.

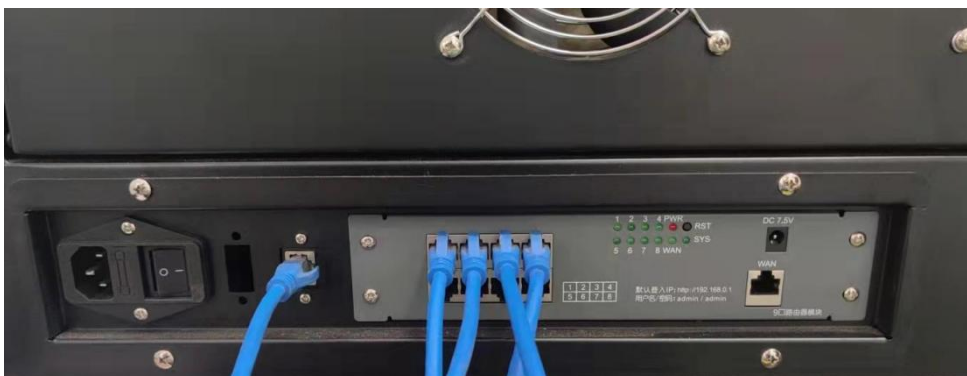


VII. How to link up machine (1 router can connect up to 4 machines)

One end of the LAN cable connected to the left port (individual game port) and another end to 1 of the 8 ports at on the right (router port). Each additional game will then run the LAN cable from their master port to the original games router port. Then switch on the machines at the same time (otherwise the link up will not work)



Below is example connection for 4 machines



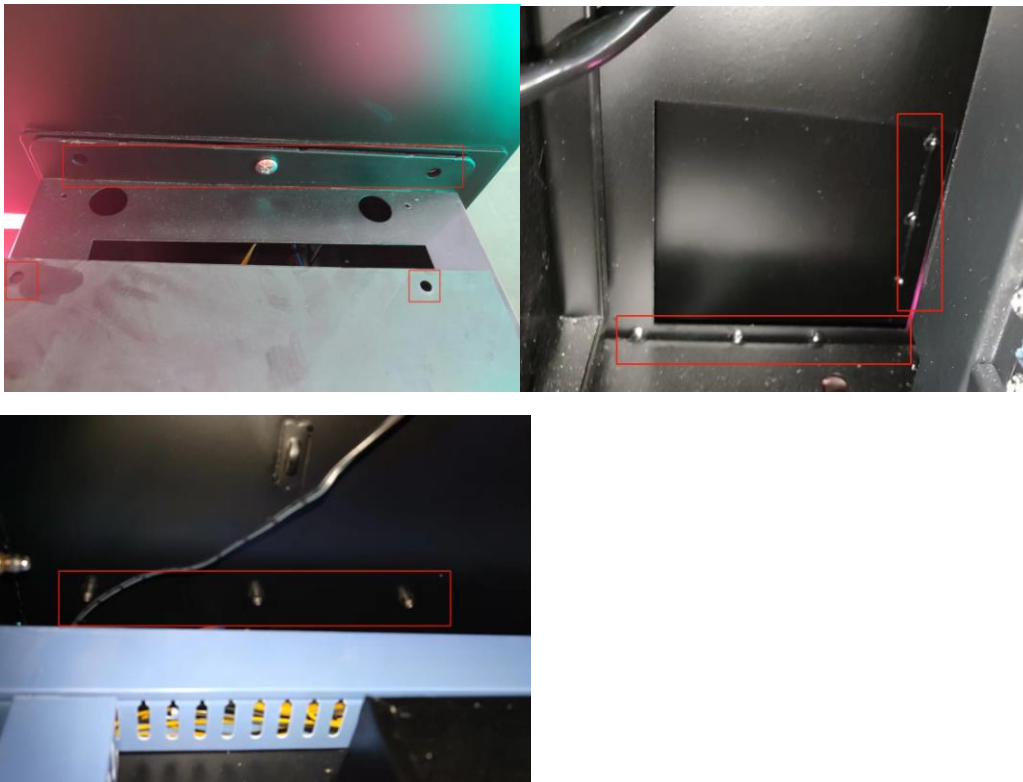
VIII. How to turn on the machine

This is the 3-in-1 master plug for the entire machine



IX. Left and right side connection installation

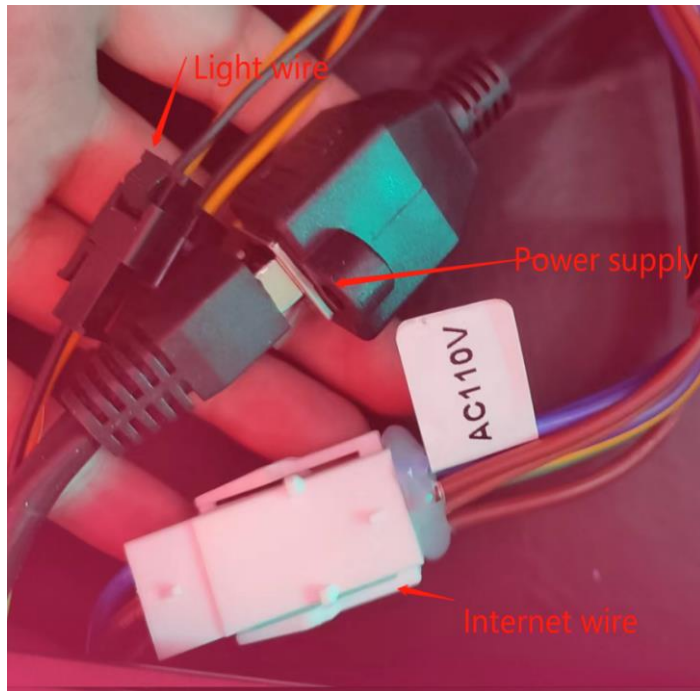
Tighten all connecting screws from the outside in. (Left and right are the same operation)



-Right side wire connection:

JET Games Corporation 822 South Nova Road, Daytona Beach FL 32114
www.JETGamesUSA.com

-
- 1-Light wire
 - 2-Internet wire
 - 3-Power supply



- 1-Air tube
- 2-12V LED light

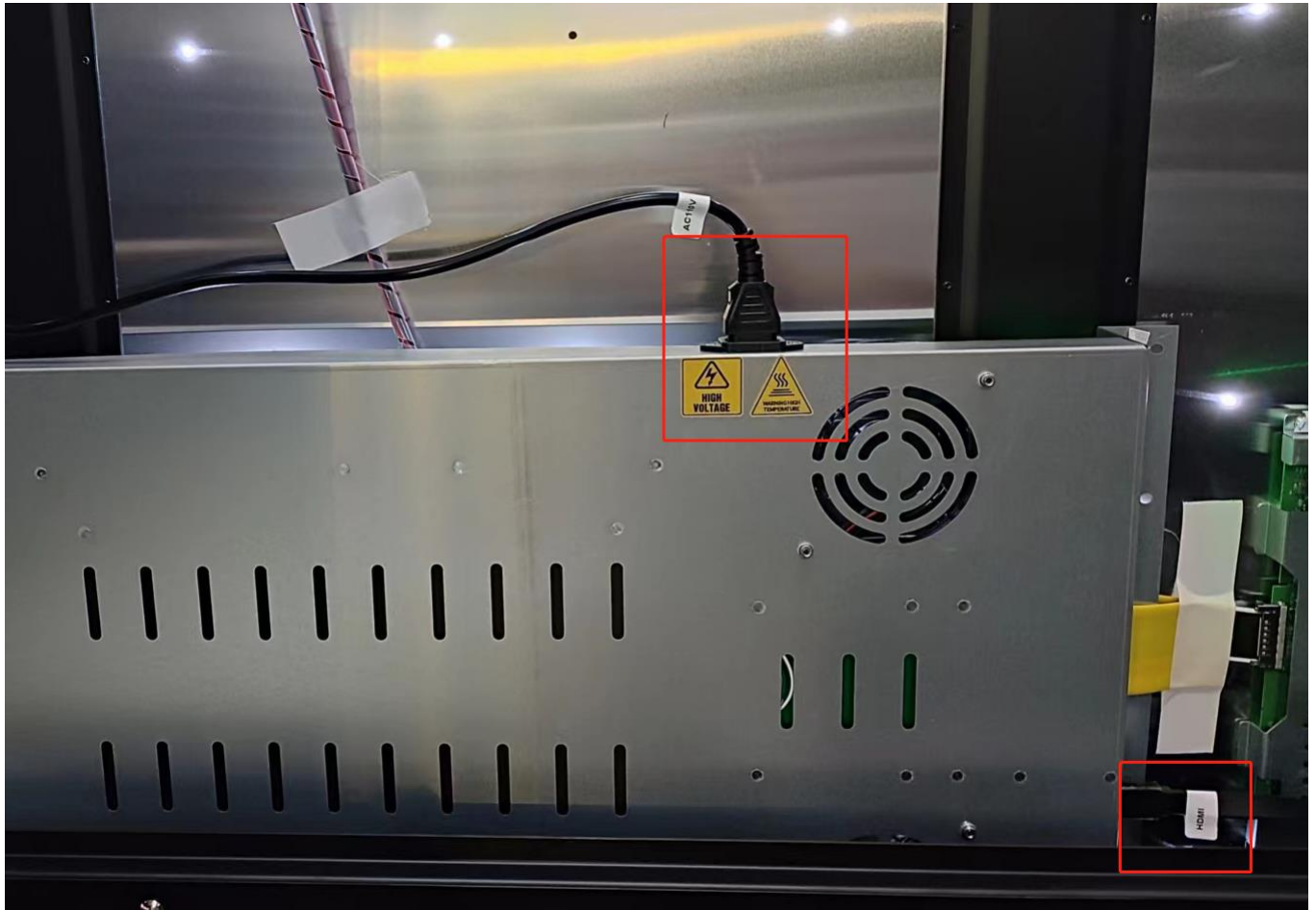


Same wire connection wire as the front side

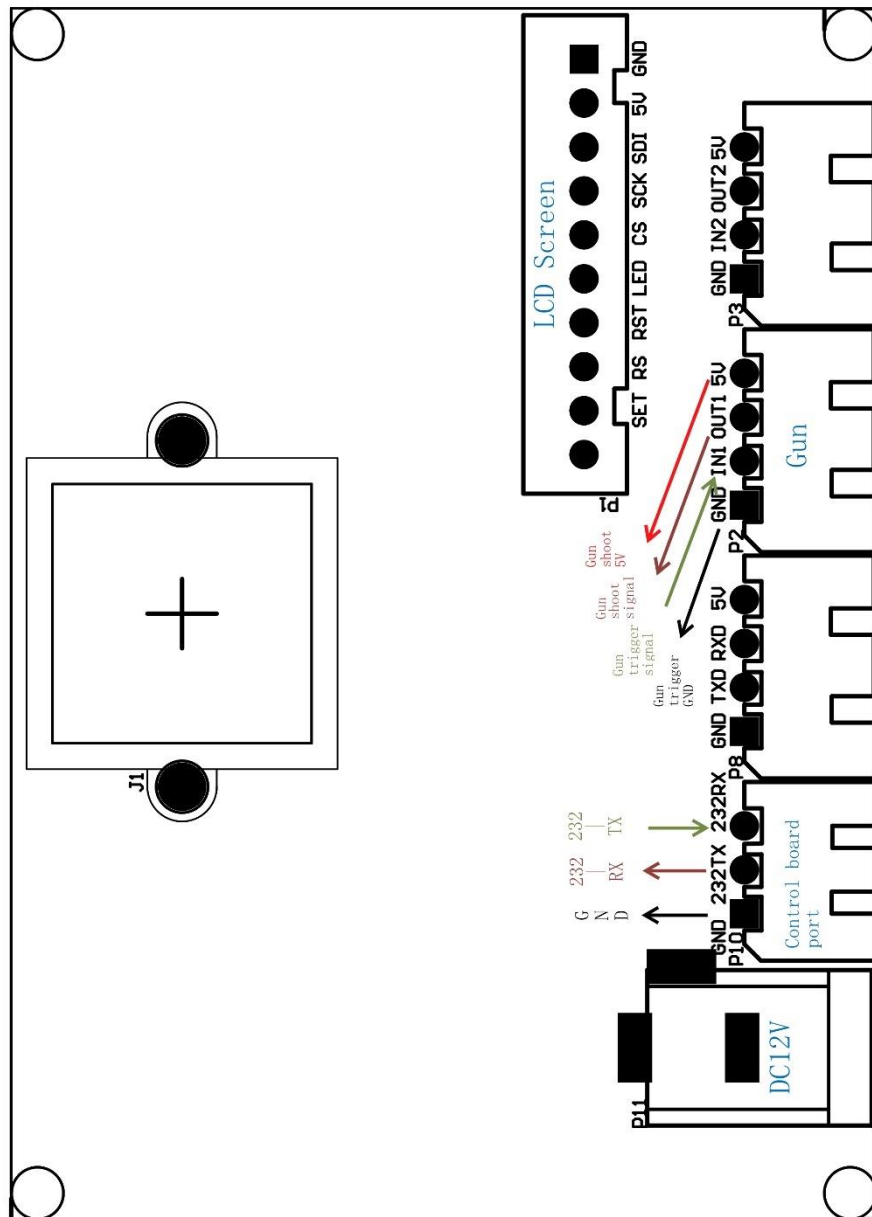
Wire connection:

1× HDMI cable

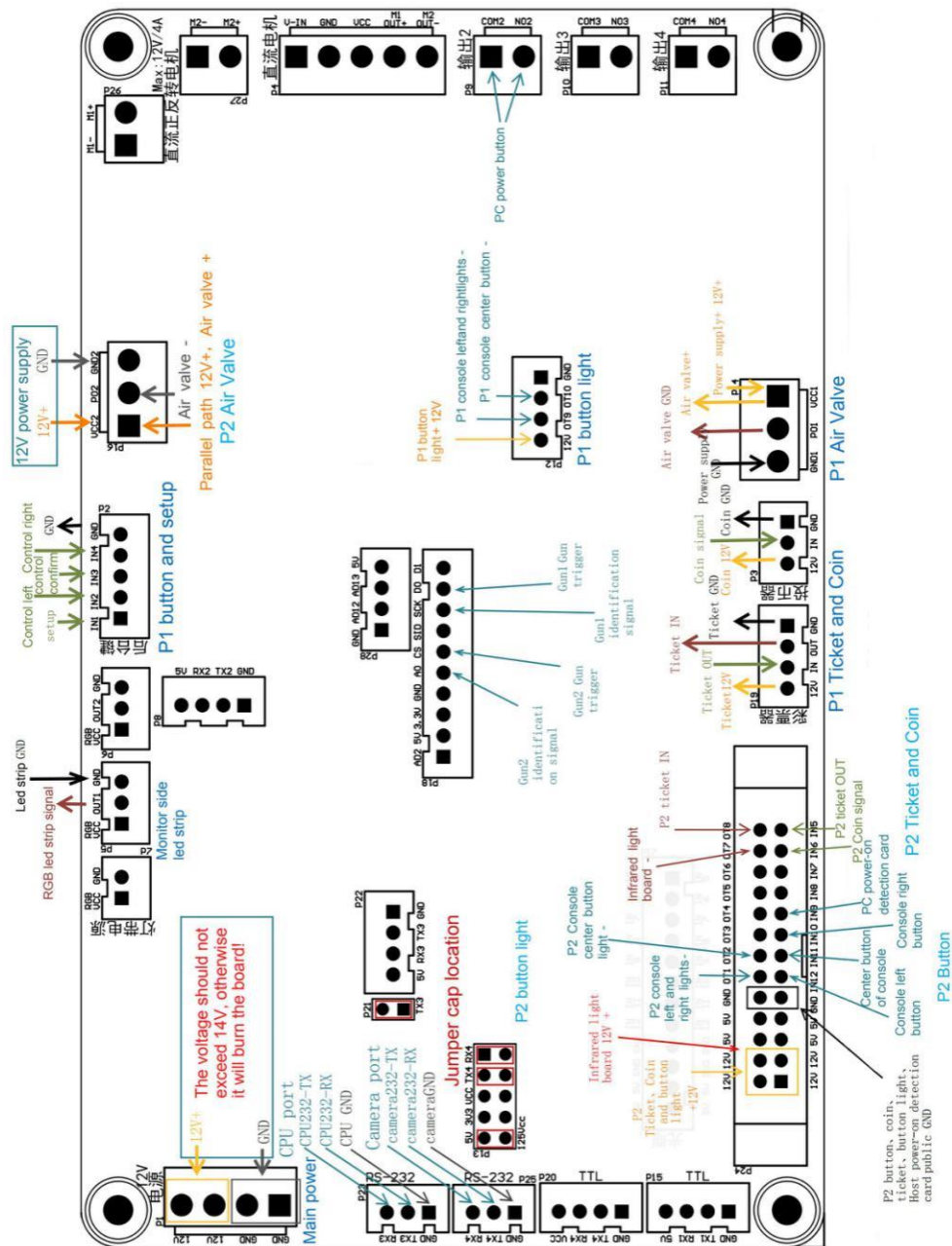
1× Air compressor



Camera board wiring drawing



IO board wiring drawing



X. Troubleshooting

Error	Reason	Solution
On Power Up no Video is shown on the screen, dark screen no back lights	No power to the screen	Connect or replace the power cable
	The signal cable is not connected or damaged	Connect or replace the signal cable
On power up there is no power to AC or DC power	The fuse is burned	Replace the fuse
	The power switch is off	Turn on the power switch
No power to the (I/O) control board	Check the power supply output (12 volts DC)	Check the power supply output
The aim of the gun is not working or showing on the screen (shooting only in upper left corner of screen)	The position of the camera is not correct	Adjust the switch above the camera to "ON" then adjust the display to the red frame
	The camera is broken	Replace the camera
	The infrared gun is broken	Replace the infrared
	The gun calibration is not correct	Enter into the system setting to adjust gun Calibration
No recoil when shooting	Check the air pressure display is normal	Check if the air pressure is adjusted to 90
	Check if the air pump is working	Check if the power supply of the air pump work(Discharge of water from the air pump every 2 weeks)










BIG SHOT PART LIST

Name	NO.	Picture	Price
Boards			
Camera board	BS-01-003		Call Distributor
IO board	BS-01-004		Call Distributor
Small display	BS-01-005		Call Distributor
PC	BS-01-006		Call Distributor

Gun Part

Complete gun with wire	BS-01-016		Call Distributor
Set of gun body	BS-03-202		Call Distributor
Gun Microswitch	BS-01-017		Call Distributor
Set of gun wire	BS-01-019		Call Distributor
Trigger	BS-03-205		Call Distributor
Gun tube	BS-03-206-A		Call Distributor

Gun sensor	BS-01-020		Call Distributor
Silencer	BS-03-208		Call Distributor
Torsional spring	BS-03-021		Call Distributor
Adjustment connector	BS-03-035		Call Distributor
Blue aluminium gun lazer and tube mount	BS-03-211		Call Distributor
Red aluminium gun slide stop(Barrel Bushing)	BS-03-212		Call Distributor
Gun Cylinder part I (Inisde firing tube)	BS-03-213		Call Distributor

Gun Cylinder part II(Outside cylinder block)	BS-03-214		Call Distributor
Spring	BS-03-215		Call Distributor
Top Slide	BS-03-216		Call Distributor
Gun tube screw M4*6	BS-03-217		Call Distributor
Gun front body head screw M3*8	BS-03-218		Call Distributor
Gun slide screw 1 M4*16	BS-03-219		Call Distributor
Gun slide screw 2 M3*10	BS-03-220		Call Distributor

Others

Top light box	BS-03-022		Call Distributor
85" monitor front acrylic	BS-03-026		Call Distributor
Acrylic gun holder	BS-03-303		Call Distributor
Round button	BS-01-015		Call Distributor
Triangle button	BS-01-014		Call Distributor
Power supply LRS-350-12	BS-01-007		Call Distributor

LED power supply	BS-01-008		Call Distributor
PC 12V power adaptor	BS--01-012		Call Distributor
Solenoid valve	BS-01-010		Call Distributor
Air discharge valve 110V	BS-01-011-A		Call Distributor
Air discharge valve 220V	BS-01-011-B		Call Distributor
Filter	BS-03-012		Call Distributor
12V fan	BS-01-021		Call Distributor

Router with power adaptor	BS-01-023		Call Distributor
EMI filter	BS-01-024		Call Distributor
85" monitor	BS-01-025		Call Distributor
110V air compressor	BS-01-033		Call Distributor
220V compressor	BS-01-034		Call Distributor
Air hose 1m	BS-03-034		Call Distributor
Hose adjustment connector	BS-03-035		Call Distributor

Hose connector	BS-03- 036		Call Distributor
-------------------	-----------------------	---	---------------------